



# GMT MONTHLY MEMBERSHIP PROGRESS REPORT

Results as of: 5/31/2026

Multiple District 3231

LOCATION: INDIA

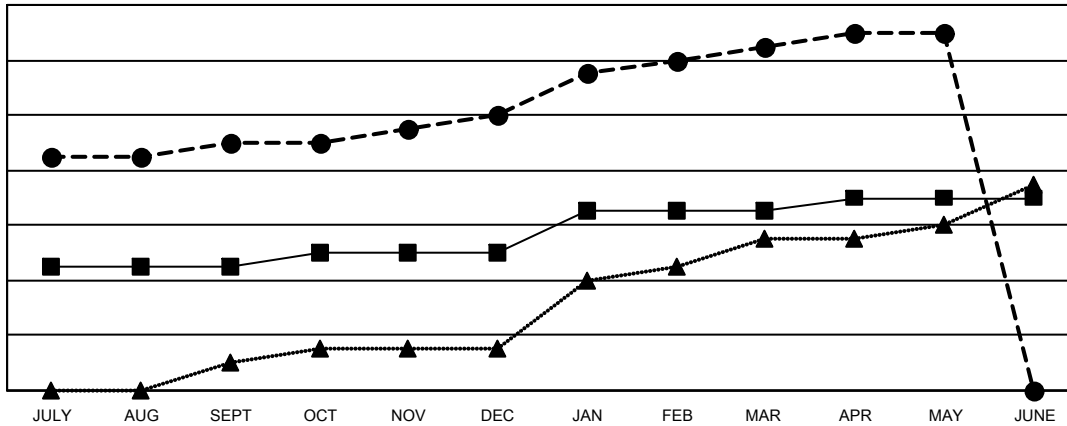
GMT: OPEN

GMT CA 6 - I

Clubs			
RESULTS FOR 2025-2026			
QUARTER	NEW CLUB GOAL	NEW CLUBS	DROPPED CLUBS
JULY/AUG/SEPT	9	18	2
OCT/NOV/DEC	1	2	20
JAN/FEB/MAR	3	5	4
APR/MAY/JUNE	1	1	0

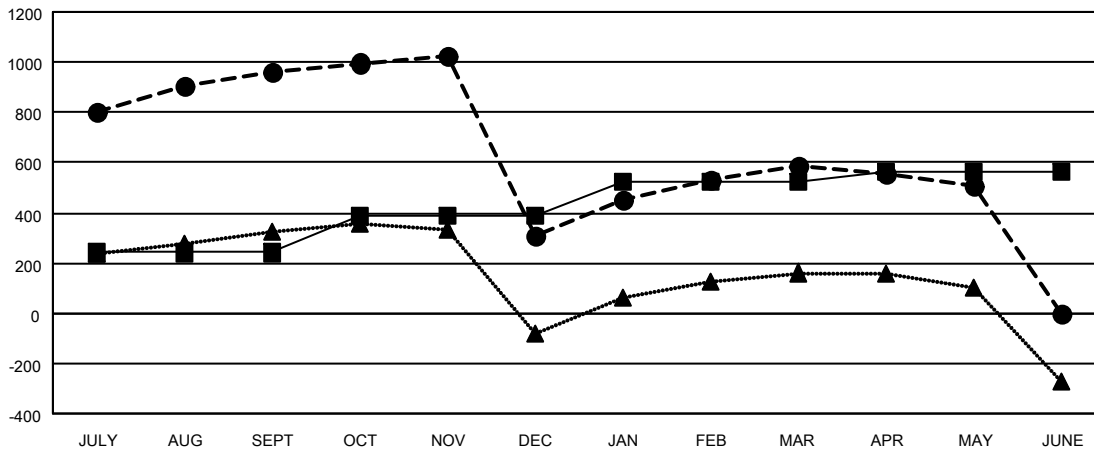
Members			
RESULTS FOR 2025-2026			
QUARTER	MEMBER GROWTH NET GOAL	MEMBER GROWTH ACTUAL	DROPPED MEMBERS ACTUAL (including transfers)
JULY/AUG/SEPT	241	1,237	204
OCT/NOV/DEC	150	309	902
JAN/FEB/MAR	130	469	81
APR/MAY/JUNE	45	166	207

GOALS AND ACTUAL NEW CLUBS CUMULATIVE



- - CURRENT YEAR GOALS FOR NEW CLUBS
- - CURRENT YEAR ACTUAL NEW CLUBS
- ▲ - LAST YEAR ACTUAL NEW CLUBS

GOALS AND ACTUAL MEMBERS CUMULATIVE



- - MEMBER GROWTH NET GOAL
- - MEMBER GROWTH ACTUAL
- ▲ - LAST YEAR MEMBERSHIP ACTUAL

DROPPED CLUBS: 26	196 CLUBS OF 314 ADDED 1 OR MORE NEW MEMBERS	<b>GENDER DISTRIBUTION</b>
		MALE 6,769 (61.93%)
		FEMALE 4,161 (38.07%)
<b>DROPPED MEMBERS</b>	<a href="#">CLICK HERE FOR CUMULATIVE MEMBERSHIP DATA</a>	TOTAL FAMILY UNIT MEMBERS 4,510
DECEASED 46		FAMILY MEMBERS PAYING HALF DUES 2,409
CLUB CANCELLED 542		
OTHER 805		
<b>TOTAL 1,393</b>		